



# 2008-09 PBAEX Viper (50uL Brush)

Oil Per Board: 50 uL Oil Pattern Distance: 38 Feet Volume Oil Total: 22.4 mL Total Boards Crossed: 448 Boards

Forward Oil Total: 10.15 mL  
Forward Boards Crossed: 203 Boards

Reverse Oil Total: 12.25 mL  
Reverse Boards Crossed: 245 Boards

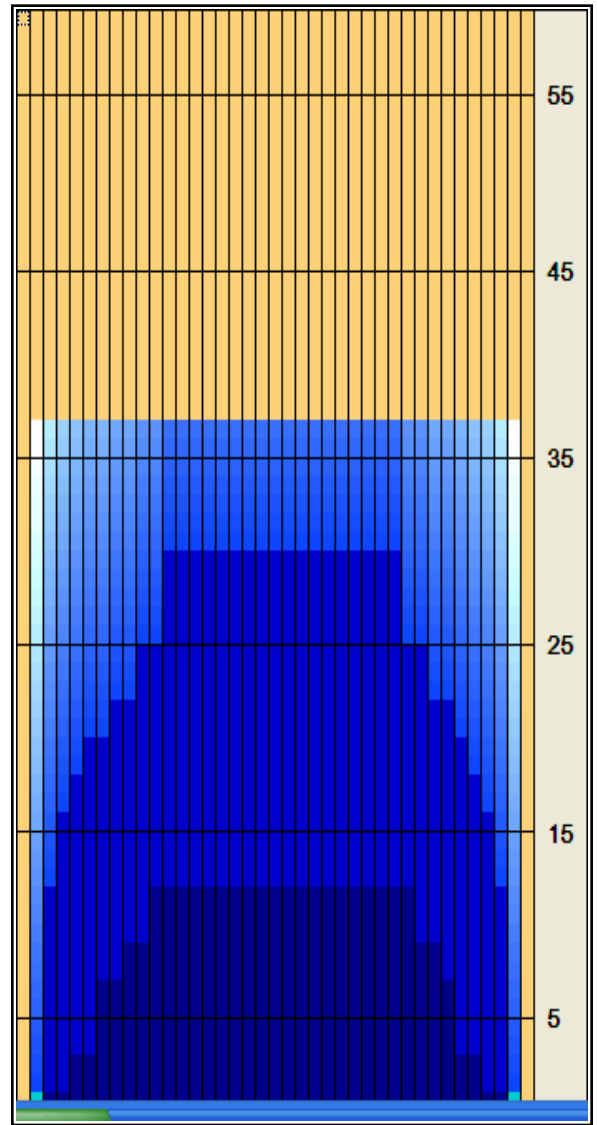
	Start	Stop	Loads	Speed	Crossed	Start	End	Feet	T.Oil
1	2L	2R	2	14	74	0.0	1.9	1.9	3,700
2	5L	5R	1	14	31	1.9	3.8	1.9	1550
3	7L	7R	2	14	54	3.8	7.7	3.9	2700
4	9L	8R	1	18	24	7.7	10.2	2.5	1200
5	11L	10R	1	18	20	10.2	12.7	2.5	1000
6	2L	2R	0	18	0	12.7	27.0	14.3	0
7	2L	2R	0	22	0	27.0	33.0	6.0	0
8	2L	2R	0	30	0	33.0	38.0	5.0	0

Navigation: Forward Reverse More Info

	Start	Stop	Loads	Speed	Crossed	Start	End	Feet	T.Oil
1	2L	2R	0	30	0	38.0	30.0	-8.0	0
2	12L	11R	2	18	36	30.0	24.9	-5.1	1800
3	10L	9R	1	18	22	24.9	22.4	-2.5	1100
4	8L	7R	1	18	26	22.4	19.9	-2.5	1300
5	6L	6R	1	14	29	19.9	18.0	-1.9	1450
6	5L	5R	1	14	31	18.0	16.1	-1.9	1550
7	4L	4R	2	14	66	16.1	12.2	-3.9	3300
8	3L	3R	1	10	35	12.2	10.8	-1.4	1750
9	2L	2R	0	10	0	10.8	0.0	-10.8	0

Navigation: Forward Reverse More Info

Forward Oil  
Reverse Oil  
Combined Oil  
Buff Area



Arrow Zone Ratios

Item	2-5L:16L-20	6-10L:16:-20	11-15L:16L-20	16L-20:20-16R	16L-20:20-16R	20-16R:15-11R	20-16R:10-6R	20-16R:5-2R
ul Arrow	212.5	540	780	800	800	800	580	212.5
Zone Ratio	3.76	1.48	1.03	1	1	1	1.38	3.76

Track Zone Ratios

Item	3L-7L:18L-18R	8L-12L:18L-18R	13L-17L:18L-18R	18L-18R:17R-13R	18L-18R:12R-8R	18L-18R:7R-3R
Description	Outside Track:Middle	Middle Track:Middle	Inside Track:Middle	Middle: Inside Track	Middle:Middle Track	Middle:Outside Track
Track Zone Ratio	2.42	1.21	1	1	1.13	2.35

